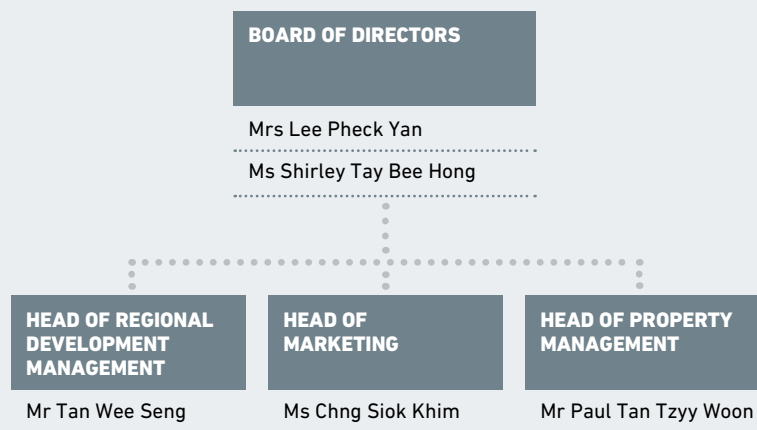
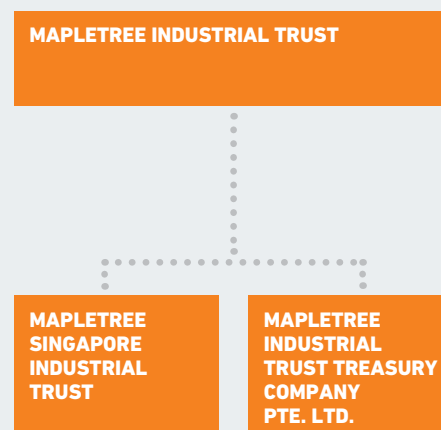


# CORPORATE AND TRUST STRUCTURE

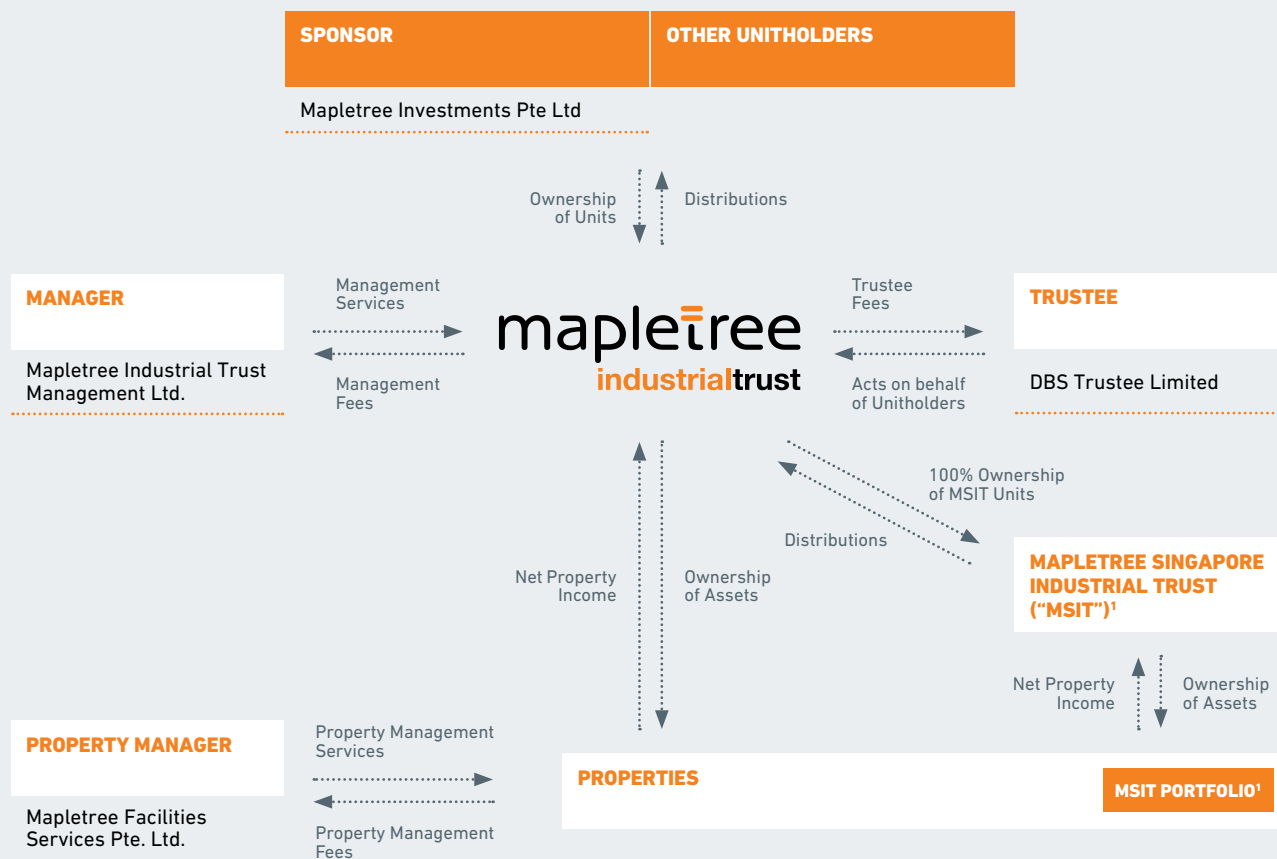
## MAPLETREE FACILITIES SERVICES PTE. LTD.



## CORPORATE STRUCTURE



## TRUST STRUCTURE



<sup>1</sup> MSIT was constituted as a private trust on 27 March 2006. The MSIT portfolio comprises two Hi-Tech Buildings and four Light Industrial Buildings in Singapore. MIT acquired MSIT on Listing Date, 21 October 2010.