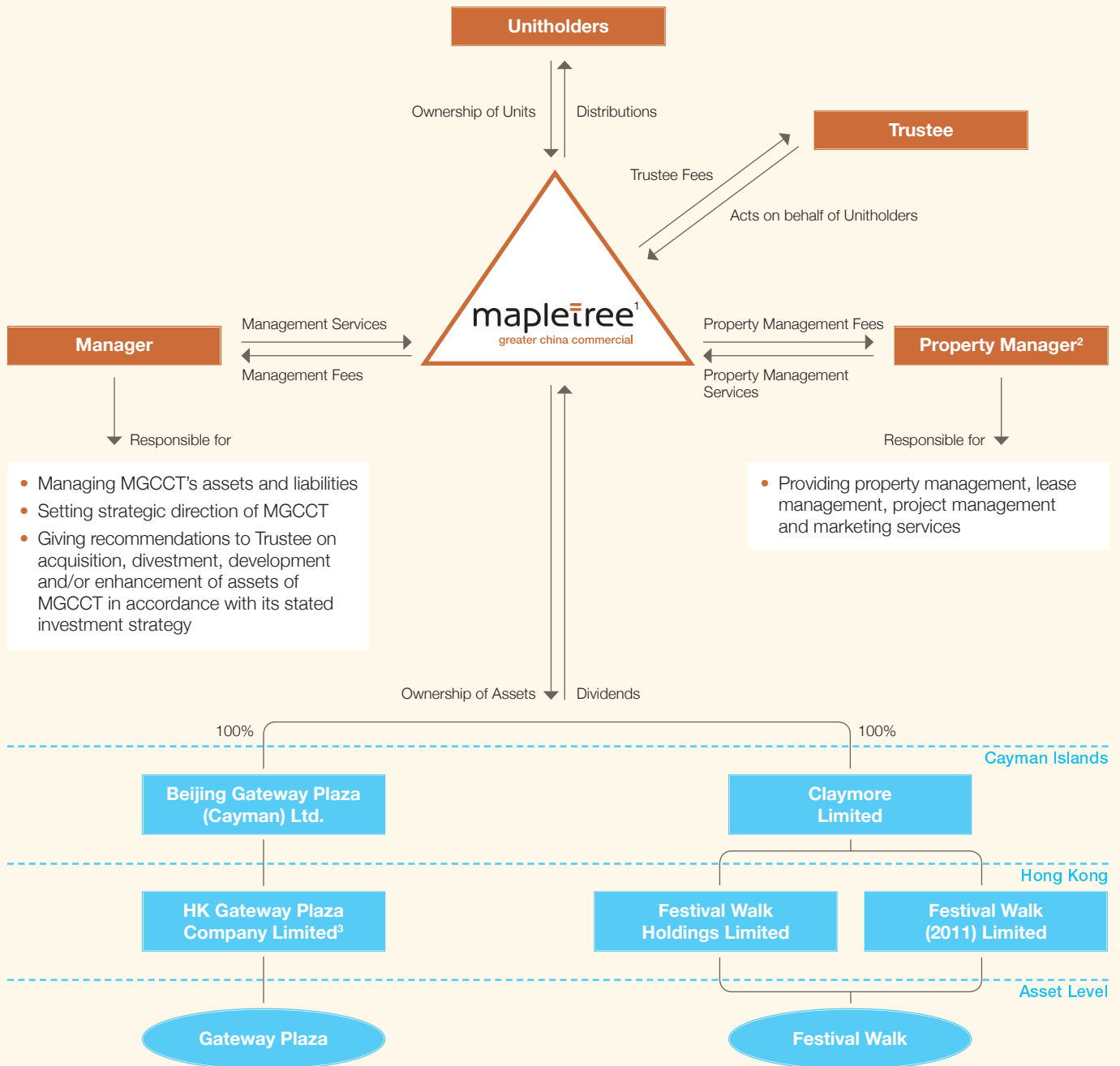


Trust Structure



¹ The Trustee holds 100.0% of Mapletree Greater China Commercial Trust Treasury Company (S) Pte. Ltd., in which it holds 100.0% of Mapletree Greater China Commercial Treasury Company (HK SAR) Limited (the "Hong Kong Treasury Company"). The Hong Kong Treasury Company is a special purpose vehicle incorporated in Hong Kong and owned by MGCCT for the purposes of (i) lending, borrowing or raising money, (ii) carrying out foreign exchange and interest rate hedging activities, financial futures trading, financial derivatives trading and other risk management activities in foreign currency or (iii) any other treasury management functions for and on behalf of MGCCT.

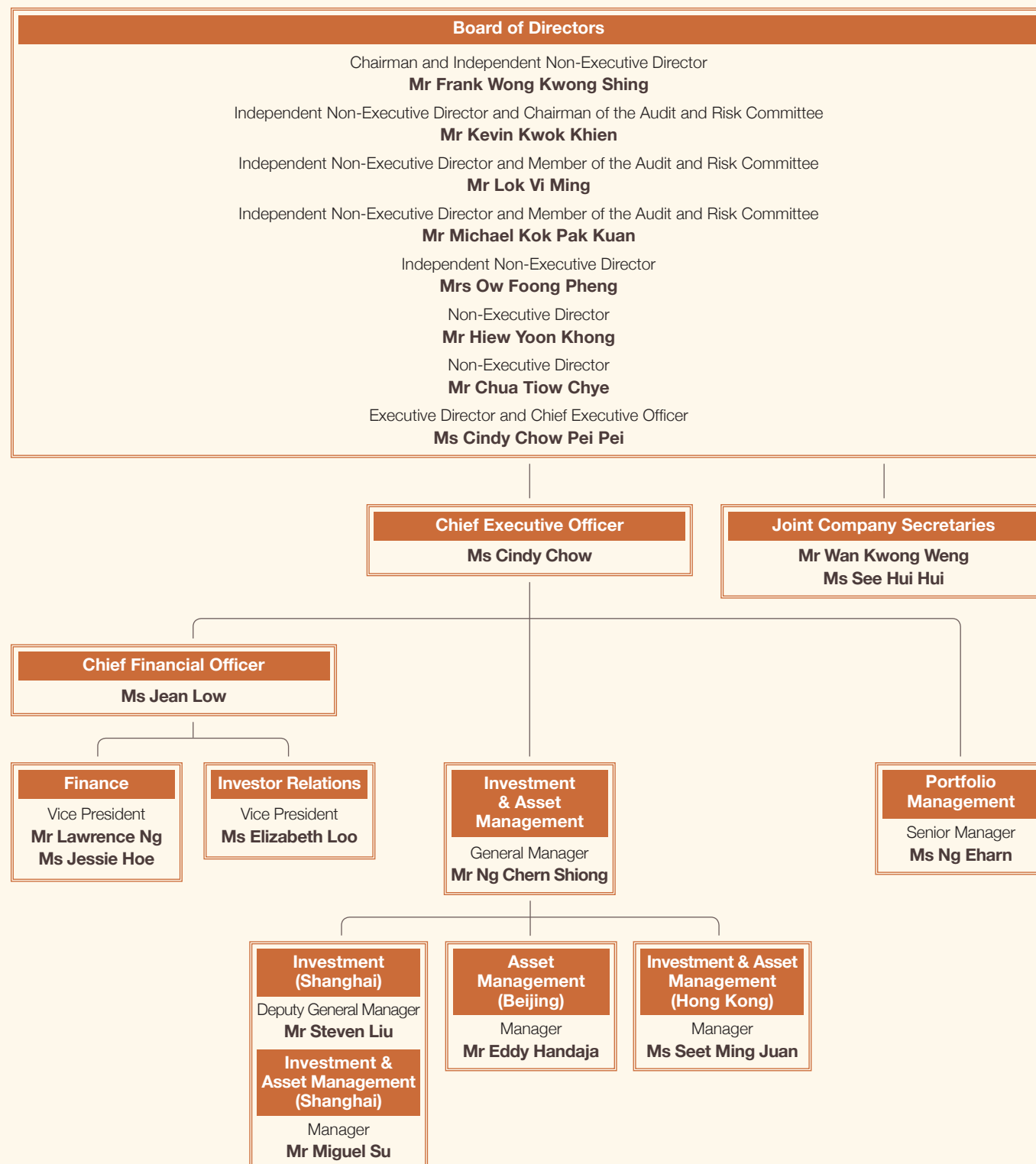
² The Property Manager is appointed pursuant to the Master Property Management agreement entered into between the Manager, the Trustee and the Property Manager.

³ HK Gateway Plaza Company Limited holds 100.0% of Gateway Plaza Property Operations (Beijing) Limited, a company incorporated in China. Gateway Plaza Property Operations (Beijing) Limited is established to facilitate the registration of tenancy agreements between HK Gateway Plaza Company Limited and tenants of Gateway Plaza. HK Gateway Plaza Company Limited pays Gateway Plaza Property Operations (Beijing) Limited the costs incurred in rendering such services, and an administrative cost equivalent to 5.0% of such costs. Both the Manager and Property Manager are wholly-owned subsidiaries of the Sponsor.

Organisation Structure

The Manager

Mapletree Greater China Commercial Trust Management Ltd.



Festival Walk



The Property Manager

Mapletree Greater China Property Management Limited ("MGCPM")

